

Optical Engineering

SPIDigitalLibrary.org/oe

One-dimensional integral imaging display using a variable parallax barrier

Fei Wu
Huan Deng
Da-Hai Li
Qiong-Hua Wang

One-dimensional integral imaging display using a variable parallax barrier

Fei Wu
 Huan Deng
 Da-Hai Li
 Qiong-Hua Wang
 Sichuan University
 School of Electronics and Information Engineering
 Chengdu 610065, China
 and
 Chengdu Technological University
 Department of Communication Engineering
 Chengdu 611730, China
 E-mail: qhawang@scu.edu.cn

Abstract. We analyze the effect of aperture width of the parallax barrier on the viewing angle of one-dimensional integral imaging (1-DII) display and propose a 1-DII display that consists of a display panel and a variable parallax barrier. When the variable parallax barrier changes its aperture width, the viewing angle and the optical efficiency of the proposed 1-DII display are compared. The viewing angle is increased by decreasing the aperture width of the variable parallax barrier, while the optical efficiency is increased by increasing the aperture width of the variable parallax barrier. © The Authors. Published by SPIE under a Creative Commons Attribution 3.0 Unported License. Distribution or reproduction of this work in whole or in part requires full attribution of the original publication, including its DOI. [DOI: [10.1117/1.OE.52.9.093102](https://doi.org/10.1117/1.OE.52.9.093102)]

Subject terms: integral imaging; three-dimensional display; variable parallax barrier.

Paper 130942 received Jun. 26, 2013; revised manuscript received Aug. 20, 2013; accepted for publication Aug. 21, 2013; published online Sep. 10, 2013.

1 Introduction

Integral imaging (II) display that presents true three-dimensional (3-D) images with full parallax and continuous viewpoints is regarded as a promising 3-D display.¹ But it is difficult to realize high resolution, wide viewing angle, and large depth display.²⁻⁴ To overcome these disadvantages, a number of methods have been proposed.⁵⁻⁷ A conventional one-dimensional integral imaging (1-DII) display reduces ray information by removing vertical parallax and provides 3-D images with high resolution in the vertical direction.⁸⁻¹⁰ Although 1-DII autostereoscopic display resembles a multi-view display, an important difference between the 1-DII display and the multiview autostereoscopic display is defined in terms of the position and the interval of beam condensing points. There is no need to predetermine the observer's viewpoints in the 1-DII display. However, the observer's viewpoints are light ray converging points and are an important design parameter in the multiview autostereoscopic display. The 1-DII displays have been implemented by using a parallax barrier or a lenticular lens array. The 1-DII display using a parallax barrier uses less space and a lower cost than that using a lenticular lens array.¹¹ Moreover, using the parallax barrier is simpler and has a lower cost than using the lenticular lens array. So the 1-DII display using a parallax barrier is a practical solution for a low cost and easy-viewable 3-D display. However, the relationship between the aperture width of the parallax barrier and the viewing angle of the 1-DII display has not been studied. Therefore, we analyze the effect of aperture width of the parallax barrier on the viewing angle of the 1-DII display. Moreover, we propose a 1-DII display using a variable parallax barrier. The viewing angle and the optical efficiency can be adjusted by adjusting the aperture width of the variable parallax barrier.

2 Structure and Principle

The primary viewing zone of the 1-DII display using a parallax barrier is shown in Fig. 1. Lights emitted from an elemental image displayed on the display panel are

modulated by the corresponding slit and the theoretical viewing zone, in which the observer can theoretically see 3-D images is determined by the solid lines. However, flipping images are seen in part of the theoretical viewing zone which is determined by the long-dashed lines. Therefore, orthoscopic images are only seen in the primary viewing zone which is determined by the short-dashed lines.

Suppose that each parallax barrier ideally integrates the light into one line, point A is one point of the ideal line, L is the distance between the parallax barrier and the observer, g is the gap between the parallax barrier and the display panel, and l is the distance between the point A and the display panel. The pitch and the aperture width of the parallax barrier are P_B and P_W , respectively. Based on the geometric relationships in Fig. 1, the viewing angle θ can be obtained as

$$\theta = 2 \arctan\left(\frac{P_B}{2l}\right). \quad (1)$$

The relationship between l and P_W exists as

$$l = \frac{P_B g}{P_B - P_W}. \quad (2)$$

From Eqs. (1) and (2), the relationship between the aperture width and the viewing angle is obtained as

$$\theta = 2 \arctan\left(\frac{P_B - P_W}{2g}\right). \quad (3)$$

From Eq. (3), we can see that when P_B and g are fixed, the viewing angle θ can be increased by decreasing the aperture width and vice versa. The relationship between the aperture width and the viewing angle are not only obtained in 1-DII display using a parallax barrier but also in two-dimensional integral imaging display using a pinhole array.

The optical efficiency of the 1-DII display using a parallax barrier φ is¹²

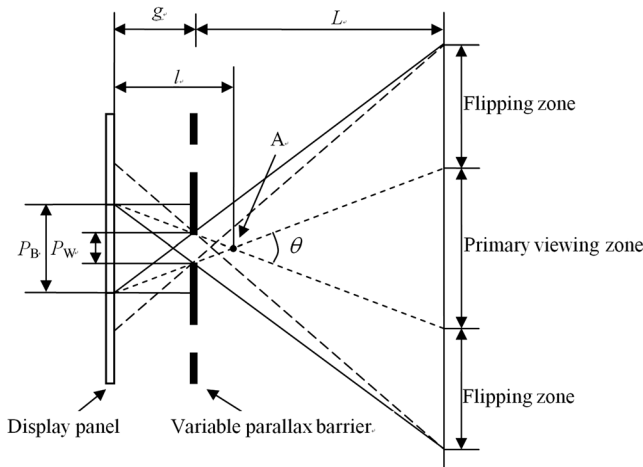


Fig. 1 Primary viewing zone of the one-dimensional integral imaging display using a parallax barrier.

$$\varphi = \frac{P_W}{P_B} \tag{4}$$

It is obvious that the optical efficiency of the 1-DII display is increased by increasing the aperture width of the parallax barrier and vice versa. As mentioned above, the viewing angle and the optical efficiency of the 1-DII display using a parallax barrier cannot be simultaneously improved by adjusting the aperture width of the parallax barrier. Therefore, we proposed a 1-DII display using a variable parallax barrier. Figure 2 illustrates the structure of the proposed 1-DII display. It consists of a display panel and a variable parallax barrier. Aperture centers of the variable parallax barrier are located at the centers of the corresponding elemental images on the display panel. Lights from the elemental image array (EIA) displayed on the display panel are modulated by the variable parallax barrier, which reconstructs the angular distribution of the rays and hence displays the 3-D images.

There is only an elemental image integrated in Fig. 1. In practice, the more elemental images that are integrated, the smaller the viewing angle becomes.¹³ The viewing angle of the proposed 1-DII display θ' can be obtained as

$$\theta' = 2 \arctan \left[\frac{P_B - P_W}{2g} - \frac{(N - 1)P_B}{2L} \right], \tag{5}$$

where N is the number of the elemental images in the horizontal direction. Whatever the number of the elemental

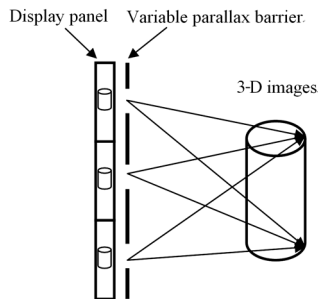


Fig. 2 Structure of the proposed 1-DII display.

images integrated, the viewing angle of the proposed 1-DII display can also be increased by decreasing the aperture width of the variable parallax barrier and vice versa.

3 Experiments and Results

We performed an experiment to verify the proposed 1-DII display. In our experiment, a back light unit and a printed film were combined as a display panel with a high resolution. The display panel was used to generate three identical EIAs, simultaneously. Another printed film was used to generate three parallax barriers with different aperture widths. A high-resolution printer, SCREEN Tanto 6120, was used to print two films, and two printed films are stuck well on a glass substrate. The parameters of the prototype are shown in Table 1.

The EIA of 3-D scenes “SC” is generated by using a computer.¹⁴ The EIA consists of 51 elemental images and each elemental image has 60×2100 pixels. The letters “S” and “C” are located 60 mm in front of and behind the display panel, respectively.

The top, center, and bottom scene “SC”s are behind the three parallax barriers with the aperture widths are 0.25, 0.5, and 0.75 mm, respectively. Corresponding to the aperture widths of three parallax barriers, the viewing angles are 18, 14.6, and 12 deg, respectively. When the viewing angle is 8 deg to the left, there are flipping images in the center and bottom scenes, as shown in Fig. 3(a). Decreasing the viewing angle to 7 deg to the left, there are also flipping images in the bottom scene, as shown in Fig. 3(b). Decreasing the viewing angle to the middle, the full white luminances of 3-D images reconstructed through three parallax barriers are 10.2, 20.1, and 30.6 cd/m², as shown in Fig. 3(c). The optical efficiencies of three 3-D images are 5.1%, 10.05%, and 15.3%, respectively. When the viewing angle increases to 7 deg to the right, there are flipping images in the bottom scene, as shown in Fig. 3(d). Increasing the viewing angle to

Table 1 Parameters of the prototype.

Specifications	Values
P_B (mm)	5
g (mm)	5
L (mm)	390
N	51

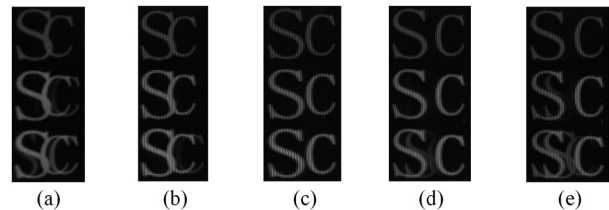


Fig. 3 Images viewed from (a) left 8 deg, (b) left 7 deg, (c) middle, (d) right 7 deg, and (e) right 8 deg.

8 deg to the right, there are also flipping images in the center and bottom scenes, as shown in Fig. 3(e).

The experimental results proved that the viewing angle of the proposed 1-DII display is increased by decreasing the aperture width of the parallax barrier. The experimental results also show that the optical efficiency of the proposed 1-DII display is increased by increasing the aperture width of the parallax barrier. For multiple observers, the viewing angle is more important than the optical efficiency. For a single observer, the optical efficiency is more important than the viewing angle. Viewing angle priority 1-DII display is obtained by decreasing the aperture width of the variable parallax barrier, while brightness priority 1-DII display is obtained by increasing the aperture width of the variable parallax barrier. Therefore, the aperture width of the variable parallax barrier can be adjusted to satisfy the observers' requirements in the real time.

4 Conclusions

A 1-DII display using a variable parallax barrier is proposed. Its operation principle and calculation equations are described in detail. The viewing angle and the optical efficiency of the proposed 1-DII display are adjusted by adjusting the aperture width of the variable parallax barrier. It could be helpful for mobile applications.

Acknowledgments

The work is supported by the NSFC under Grant Nos. 61225022 and 61036008, the "973" Program under Grant No. 2013CB328802, and the "863" Program under Grant Nos. 2012AA011901 and 2012AA03A301.

References

1. G. Lippmann, "La photographie integrale," *C. R. Acad. Sci.* **146**, 446–451 (1908).
2. J. H. Park et al., "Analysis of viewing parameters for two display method based on integral photography," *Appl. Opt.* **40**(29), 5217–5232 (2001).
3. B. Lee, S. W. Min, and B. Javidi, "Theoretical analysis for three-dimensional integral imaging systems with double devices," *Appl. Opt.* **41**(23), 4856–4865 (2002).
4. X. Wang and H. Hua, "Theoretical analysis for integral imaging performance based on microscanning of a microlens array," *Opt. Lett.* **33**(5), 449–451 (2008).
5. J. S. Jang and B. Javidi, "Improved viewing resolution of three-dimensional integral imaging by use of nonstationary micro-optics," *Opt. Lett.* **27**(5), 324–326 (2002).
6. B. Lee, S. Jung, and J. H. Park, "Viewing-angle enhanced integral imaging by lens switching," *Opt. Lett.* **27**(10), 818–820 (2002).
7. Y. Kim et al., "Depth-enhanced three-dimensional integral imaging by use of multilayered display devices," *Appl. Opt.* **45**(18), 4334–4343 (2006).
8. D. H. Shin et al., "Magnification display of 3-D images in one-dimensional integral imaging using a lenslet array," in *Digital Holography and Three-Dimensional Imaging (DH)*, pp. DTuA7, OSA, Vancouver (2007).
9. Y. Hirayama and S. Kawasaki, "One-dimensional integral imaging 3D display systems," in *Proc. of the 3rd Int. University Communication Symposium*, pp. 141–145, ACM, New York (2009).
10. T. Saishu et al., "Distortion control in a one-dimensional integral imaging autostereoscopic display system with parallel optical beam groups," *SID Symp. Dig.* **35**(10), 1438–1441 (2004).
11. F. Wu et al., "High optical-efficiency integral imaging display with a gradient-aperture parallax barrier," *Chin. Opt. Lett.* **11**(7), 071101 (2013).
12. H. Choi et al., "A thin 3D–2D convertible integral imaging system using a pinhole array on a polarizer," *Opt. Express* **14**(12), 5183–5190 (2006).
13. H. Deng et al., "An integral-imaging three-dimensional display with wide viewing angle," *J. Soc. Inf. Disp.* **19**(10), 679–684 (2011).
14. Q. H. Wang et al., "Imitating micro-lens array for integral imaging," *Chin. Opt. Lett.* **8**(5), 512–514 (2010).



Fei Wu is working toward the PhD degree in optical engineering from the School of Electronics and Information Engineering, Sichuan University, China. He has published 15 papers. His recent research interest is information display technologies including three-dimensional (3-D) displays.



Huan Deng is a lecturer of optical engineering at the School of Electronic and Information Engineering, Sichuan University. She has published more than 10 papers. Her recent research interest is information display technologies including 3-D displays.



Da-Hai Li is a professor of optics at the School of Electronics and Information Engineering, Sichuan University. He received his MS degree from the University of Electronic Science and Technology of China in 1996 and his PhD degree from the Sichuan University in 2002, respectively. He has published more than 30 papers. His recent research interests include optics and optoelectronics, especial display technologies and optical measurements.



Qiong-Hua Wang is a professor of optics at the School of Electronics and Information Engineering, Sichuan University. She was a postdoctoral research fellow in the School of Optics/CREOL, University of Central Florida, in 2001 to 2004. She received her MS and PhD degrees from the University of Electronic Science and Technology of China (UESTC) in 1995 and 2001, respectively. She worked at UESTC in 1995 to 2001, and at Philips Mobile Display Systems, Philips Shanghai, in 2004. She has published 170 papers on display devices and systems. She holds five US patents and 21 Chinese patents. She is a senior member of Society for Information Display. Her recent research interests include optics and optoelectronics, especial display technologies.